

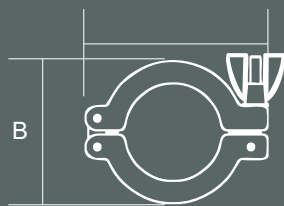
ISO-KF

ISO-KF Accessories



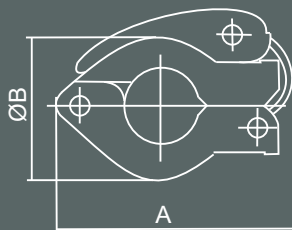
THYRACONT
Vacuum Instruments

ISO-KF Accessories



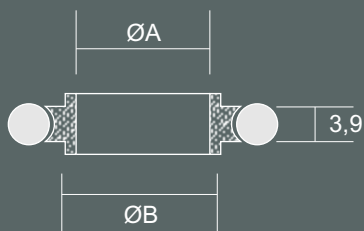
ISO-KF clamp, Aluminum

Art. No.	DN	A	B	C	D
ZSR1016	10 / 16	62	41	-	-
ZSR2025	20 / 25	72	52	-	-
ZSR3240	32 / 40	90	68	-	-



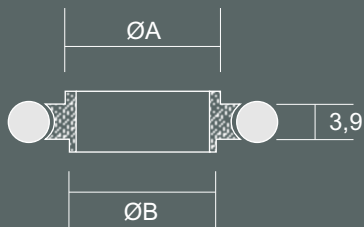
ISO-KF quick release clamp, Aluminum / Plastic

Art. No.	DN	A	B	C	D
ZSSR1016	10 / 16	66	45	-	-



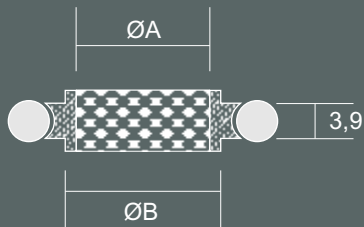
ISO-KF centering ring, stainless steel / FKM

Art. No.	DN	A	B	C	D
ZZR016	16	16	17	-	-
ZZR025	25	25	26	-	-
ZZR040	40	40	41	-	-



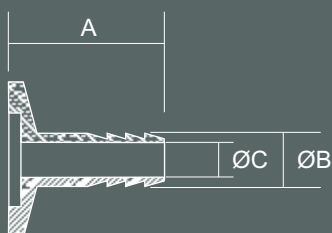
ISO-KF adaptive centering ring, stainless steel / FKM

Art. No.	DN	A	B	C	D
ZZR1016	10 / 16	17	12	-	-



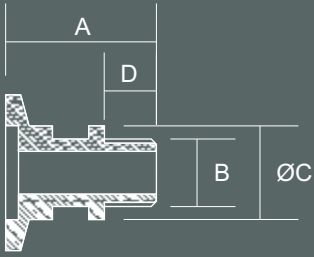
ISO-KF centering ring with wire filter, stainless steel / FKM / sinter bronze

Art. No.	DN	A	B	C	D
ZZDF016	16	16	17	-	-



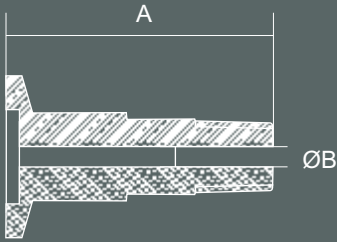
ISO-KF hose nozzle, stainless steel 1.4301

Art. No.	DN	A	B	C	D
ZSW1612	16	40	12	7	-



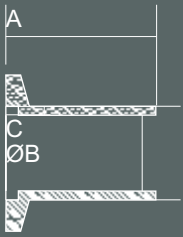
ISO-KF adaptor G1/4 male thread, stainless steel

Art. No.	DN	A	B	C	D
ZG1614	16	29	G1/4	18	10



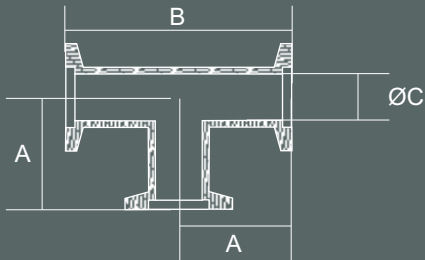
ISO-KF adaptor NPT male thread, stainless steel 1.4301

Art. No.	DN	A	B	C	D
ZNPT14	16	50	7.1	1/4"	-



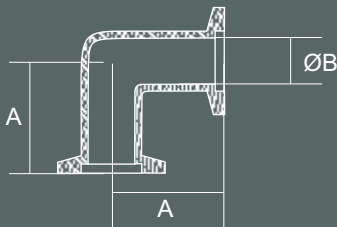
ISO-KF welding flange, stainless steel 1.4301

Art. No.	DN	A	B	C	D
ZSF016	16	30	20	2	-
ZSFL016	16	70	20	2	-
ZSF025	25	30	28	2	-
ZSFL025	25	70	28	2	-



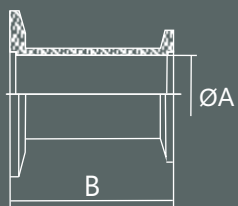
ISO-KF T piece, Aluminum

Art. No.	DN	A	B	C	D
ZTA016	16	40	80	16	-
ZTA025	25	50	100	24	-



ISO-KF elbow 90°, Aluminum

Art. No.	DN	A	B	C	D
ZBA016	16	40	16	-	-



ISO-KF reducing piece, Aluminum

Art. No.	DN	A	B	C	D
ZRRG2516	25 / 16	16	28	-	-
ZRRG4025	40 / 25	28	24	-	-



THYRACONT

Vacuum Instruments GmbH

Max-Emanuel-Straße 10

94036 Passau, Germany

Tel.: +49 (0)851 95986 0

Fax: +49 (0)851 95986 40

Email: info@thyracont-vacuum.com

www.thyracont-vacuum.com

Expertise and Responsiveness: +49 (0)851 95986 28